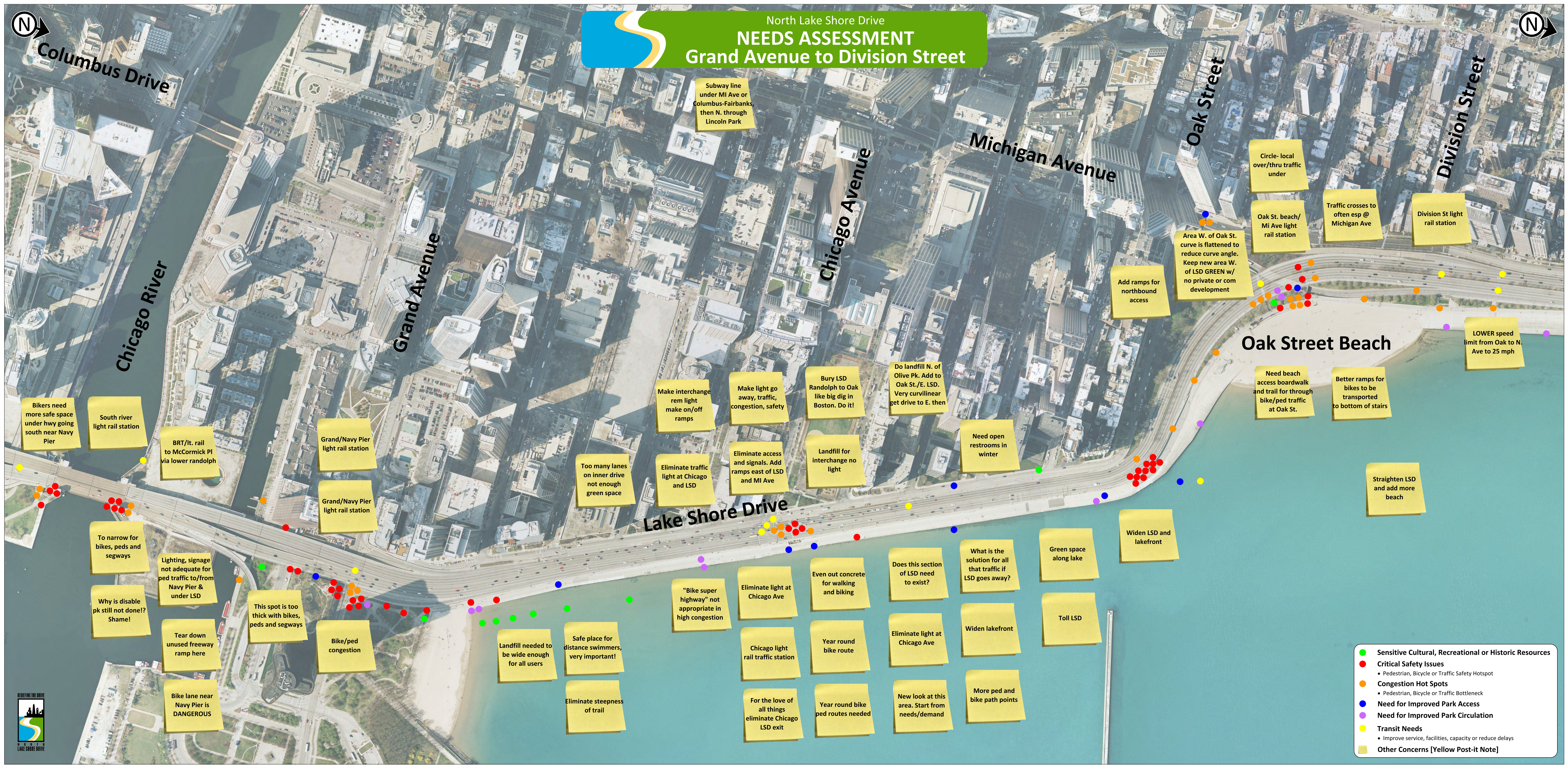




North Lake Shore Drive
NEEDS ASSESSMENT
 Grand Avenue to Division Street



- Sensitive Cultural, Recreational or Historic Resources
- Critical Safety Issues
 - Pedestrian, Bicycle or Traffic Safety Hotspot
- Congestion Hot Spots
 - Pedestrian, Bicycle or Traffic Bottleneck
- Need for Improved Park Access
- Need for Improved Park Circulation
- Transit Needs
 - Improve service, facilities, capacity or reduce delays
- Other Concerns [Yellow Post-it Note]

